

CROMTECH™ VENTILATOR FANS

OPERATION & INSTRUCTION MANUAL

Thank you for your selection of a *CROMTECH™* Ventilator Fans.

This Operation Manual explains its use, installation, checking and maintenance. CROMMELINS suggest that you retain this manual for ready reference regarding proper handling of *CROMTECH™* Ventilator Fans.



Spare Parts & Service

Phone: 1300 554 524

Freecall Fax: 1800 636 281

spareparts@crommelins.com.au

www.crommelins.com.au

Thank you for purchasing a CROMTECH™ Ventilator Fans.

This manual covers the operation, safety, and parts layout for Ventilator Fans.

The CROMTECH™ Ventilator Fans are compact and portable fans that can be operated vertical and horizontally. Designed to fit ducting these models are single phase and 250w.

Please take a moment to familiarise yourself with the proper operation procedures to maximise the safe and efficient use of this product.

Keep this owner's manual at hand, so that you can refer to it at any time.

Note: Due to constant efforts to improve our products, certain procedures and specifications are subject to change without notice.

When ordering spare parts please have handy your products model number and serial number.

Please fill in the following blanks after checking the model number and serial number on your product. (The location of these numbers, vary depending on product).

MODEL NO.																				
SERIAL NO.																				

INDEX

Australian Warranty Information	4
Safety and Maintenance	5
Model Specifications	6
AP110001, AP110002, AP160016, AP110020	6
AS110001 Cromtech™ Air Scrubber	7
Operation	8
Service	9
Maintenance	10
Parts Break down	11
AP110002 Cromtech™ Drymax Carpet Dryer	12
Operation	13
Maintenance	14
Parts Break down	15
AP160016 Cromtech™ Down Draft Blower	16
Operation	17
Maintenance & Trouble Shooting	18
Parts Break down	19
AP110020 Cromtech™ Multi Air Mover	20
Operation & Maintenance	21
Trouble Shooting	22
Parts Break down	23

AUSTRALIAN WARRANTY INFORMATION

1 YEAR CROMTECH™ MANUFACTURER'S WARRANTY

Cromtech™ products have a 1 year manufacturer's warranty.

WARRANTY EXPLAINED

CROMTECH™ is a registered trademark of Crommelins Machinery.

Crommelins Machinery warrants their goods against defects in materials and workmanship under normal use and service.

The Crommelins Machinery warranty does not cover fair wear commensurate with the age of the product, any damage caused by accident, abuse, misuse, neglect, or failure to observe proper operating instructions or proper machinery maintenance as described in the instruction manual.

It is the owner's responsibility to regularly maintain a product in accordance to the owner's manual and only use the equipment for its designed purpose.

Our goods come with guarantees that cannot be excluded under the Australian Consumer Law. You are entitled to a replacement or refund for a major failure and for compensation for any other reasonably foreseeable loss or damage. You are also entitled to have goods repaired or replaced if the goods fail to be of acceptable quality and the failure does not amount to a major failure.

CONSUMER ADVICE

Any claim under these warranties must be made in the warranty period from the date of purchase of the product.

To make a claim under the warranty, you must return the product (with proof of purchase) to the place of purchase or the closest warranty agent.

There are over 185 national authorised service/repair agents available, visit www.crommelins.com.au for their details and locations.

Where a failure does not amount to a major failure, Crommelins Machinery is entitled to choose between providing you with a repair, replacement, or refund. To obtain compensation, you would need to provide documentary evidence of the loss or damage suffered, and documentary evidence that such loss or damage was a reasonably foreseeable consequence of a failure by Crommelins Machinery to comply with a consumer guarantee under the Australian Consumer Law.

Crommelins Operations Pty Ltd trading as Crommelins Australia and Crommelins Machinery

Ph: (08) 9350 5588 **Fax:** (08) 9451 6381

sales@crommelins.com.au www.crommelins.com.au

PO Box 352, BENTLEY WA 6982, ABN 11 008 889 656

SAFETY & MAINTENANCE

⚠ WARNING To reduce the risk of fire, electric shock, or injury:

- 1) These products are for indoor use only.
- 2) Read the manual carefully and completely before attempting to operate the unit. Following the recommendations outlined in this manual will assure years of satisfactory service from your unit
- 3) Improper connection of the equipment grounding conductor can result in a risk of fire, electrical shock, or personal injury. Always use a three-wire electrical system connected to the electrical ground. For maximum protection against electrical shock, use a circuit that is protected by ground fault circuit interrupter. Check with a qualified electrician or service person if you are in doubt as to whether your outlet is properly grounded.
- 4) Do not use this machine near fuels, grain dust, solvents, thinners, or other flammable materials. Do not use flammables to clean this machine.
- 5) Do not immerse or use this unit in water. Such use may cause electric shock. To avoid electrical shock, do not expose to rain – store it indoors only. Do not expose the unit to freezing temperatures
- 6) Do not pull or carry the cord, use cord as a handle, close a door on the cord or pull cord around sharp edges/corners. Keep cord away from heated surfaces. Do not unplug cord by pulling on it. To unplug, grasp plug, not the cord. Do not handle plug or appliance with wet hands.
- 7) The fan can only be used with all safety guards attached (for safety). Do not put any objects into moving parts.
- 8) Keep free of dust, lint, hair. Keep hair, loose clothing, fingers, and all parts of the body away from moving parts.
- 9) Turn off appliance before; unplugging, moving, cleaning, or removing the guards.
- 10) Operate on a level and stable surface to prevent from falling and possible injury or damage
- 11) Do not drop or throw unit - Treatment of this type can cause damage to the components and create hazardous conditions.
- 12) Children should not operate without parent/adult/guardian supervision. Do not play with the appliance.
- 13) If the supply cord is damaged, it must be replaced by and authorised service agent or similarly qualified electrician.

MAINTENANCE:

- **Cleaning** - Clean off any grease and store machine in a dry place when not in use.
- **Guarantee** - When used in suitable working environments, this machine has a 1 year Cromtech warranty.
- **Maintaining** - Only service machine with an authorised service agent. If the supply cord is damaged, it must be replaced by the manufacturer, its service agent, or similarly qualified persons to avoid a hazard.

DISPOSAL:



Do not dispose of electrical appliances in general waste, use separate collection facilities.

MODEL SPECIFICATIONS

CROMTECH™ AIR EQUIPMENT				
MODEL	AS110001	AP110002	AP160016	AP110020
	AIR SCRUBBER	DRYMAX CARPET DRYER	DOWN DRAFT BLOWER	MULTI AIR MOVER
Wattage	250w	250w	250w	250w
Air Flow (CFM)	500CFM	850CFM	3500CFM	4500CFM
Volts	240V - 50hz			
Speed	1 Speed (1.9amp)	1 Speed (2.1amp)	2 Speed (1.4 & 2.0amp)	2 Speed (3.2 & 3.6amp)
RPM	2400rpmj	1600rpm	1200 / 1400rpm	1200 / 1400rpm
Motor	0.25hp Single Phase, Electric			
dB(A)				
Net Weight	16kg	8.5kg	19kg	13kg
Gross Weight	17kg	9.5kg	23kg	14kg
Cord Length (mm)		4.5m	6m	6m
Product Dimensions (LxWxH)	610x560x355mm	540x430x250mm	560x680x590mm	560x305x510mm
Package Dimensions	655x570x360mm	545x430x250mm	595x575x450mm	575x365x560mm
Warranty	1 Year Cromtech Warranty			

MAIN FEATURES:

- Compact design
- High impact plastic
- Stackable
- Ducting available



AP160016



AS110001



AP110002



AP110020

AS110001 CROMTECH™ AIR SCRUBBER

CAUTION: Risk of electric shock. *Can cause injury or death.*

NOTE: Remove foam cap before use

To reduce the risk of electric shock:

- Do not expose to standing water or rain
- Connect to GFCI outlet
- Do not use an extension cord
- Unplug fan before servicing or changing filters.
- Do not block air intake or outlet. One foot minimum distance to obstructions.
- Indoor use only
- Do not use as stool or bench
- Do not operate with damaged cord or plug.
- Do not run cord under carpeting. Do not cover cord with throw rugs, runners, or similar coverings. Do not route cord under furniture or appliances. Arrange cord away from traffic area and where it will not be tripped over.



TRANSPORTING THE AIR SCRUBBER:

The Air Scrubber should be transported vertically or horizontally on the appropriate feet located on the bottom of the unit or opposite the handle

ELECTRICAL REQUIREMENTS:

The Air Scrubber can be plugged into a grounded 15 Amp circuit. It draws 2 Amps with clean filters and no ducting. The amp draw will decrease slightly with added ducting and as the filters load with particulate. Due to the presence of GFCI receptacle, the Pro model must be plugged directly into a wall outlet. No extension cords should be used.

AIR DUCTING:

- Inlet Ducting** - Occasionally the area to be filtered is difficult to access and/ or the unit cannot be in the area. In such cases, the air can be ducted to the unit's inlet. A round 16" diameter flexible duct can be attached to the unit inlet. It connects by placing the wire in the duct over the duct collar lip at one location and working over it over the lip gradually. It may be removed after use for easier transport and storage.
- Outlet Ducting** - A detachable shaped exhaust ring is supplied that will allow 10" round lay-flat plastic duct to be attached to the Air Scrubbers outlet. Put the plastic duct end through the inside of the ring. Roll the duct end outward so that it over-laps the outside of the ring. Clip the ring back onto the exhaust grill.
- Negative Air Ducting** - On the Air Scrubber can be used to filter and exhaust air from a space. When exhausting to outside the space, the space will be under a slight negative pressure. This will help prevent airborne particles from leaving the space, because the negative pressure will draw air in through openings in the space's exterior surfaces.

AS110001 CROMTECH™ AIR SCRUBBER OPERATION

CAUTION: Exhausting too much air from a space with open combustion devices (e.g. furnace, fireplace or water heater) can cause those devices to backdraft. This can contaminate the space with potentially fatal gases.

In such cases, the Air Scrubber must be used in one of the following three ways:

- A. As a filtering unit only. Exhausting no air from the space and thus causing no negative pressure or back drafting.
- B. Exhausting a very limited amount of air which does not cause back-drafting. In case B, the open combustion devices must be thoroughly checked to guarantee that they do not backdraft while the Air Scrubber is running.
- C. Direct the outlet duct from the Air Scrubber to the room with the open combustion device(s). This will positively pressurize the room with HEPA filtered air, thus preventing back-drafting. As in case B, those combustion devices must be checked after the Air Scrubber is running to guarantee that they are not back-drafting.

POWER/SPEED CONTROL:

The power/speed switch is located on the control panel. When turned on to any speed, it powers the impeller fan. Occasionally the impeller fan may not start on low speed. If this occurs, rotate the speed control to high speed until the impeller fan starts, then adjust it to a lower speed.

CAUTION: *Do not remove HEPA filter with the unit on. Removing the top and filters while running will expose the dangerous rotating impeller fan. Disconnect the appliance before changing filters.*

RESETTABLE CIRCUIT BREAKER:

The 10 amp resettable circuit breaker protects the unit and devices connected to it. The circuit breaker is designed to sense the total current draw through the circuit. The circuit breaker "trips" when more than 10 amps of electrical current are drawn through the device's power cord. Should an over-current condition occur, the Air Scrubbers on-board circuit breaker prevents nuisance visits to a remote power junction box.

IMPORTANT: Total amperage of the Air Scrubber plus all devices plugged into the receptacle must not exceed 12 amps. The circuit breaker will not allow for loads in excess of 12 amps, although there is a time delay before the overloaded circuit is broken.

IMPORTANT: When the Air Scrubber is plugged into a standard wall outlet and powered the Air Scrubber's duplex outlet is live and AC voltage present.

AS110001 MAINTENANCE

SERVICING:

Before each use inspect for damage, blocked inlet/outlets. When the Air Scrubber is first turned on, check for excessive vibration. If the unit vibrates excessively or if impeller rubs on housing, turn off the unit immediately. Have a service technician inspect the unit to locate the problem.

WARNING: Use extreme caution when changing the HEPA filter as hazardous material could be trapped in the media. Always make sure to dispose of filters in the appropriate way. If you are unsure of how to safely dispose of any filter-consult an industrial hygienist to ensure that all hazardous materials are contained and disposed of properly.

AIR FILTERS:

The standard Air Scrubber HEPA System is equipped with two filters that progressively filter out smaller particles. An optional activated carbon/potassium permanganate filter can be also added. These filters must be checked regularly. Operating the unit with dirty filters will reduce the airflow, but will do no harm to the unit. The unit can be run indefinitely with dirty filters.

The two standard filters used are listed below (as installed in the unit from top to bottom):

1. 25 to 30% efficient (per ASHRAE 52.1-1992), MERV-7, pleated fabric pre-filter.
2. 99.97% DOP efficient HEPA filter

FILTER REPLACEMENT

When the amber "filter change light" illuminates. It may be time to replace one or both filters.

To check airflow accurately, an airflow meter or anemometer must be used:

1. When the filter change light illuminates; remove all ducting and run on high speed. If the filter light remains lit; replace the pre-filter and run on high again. If the light remains; it is time to replace the HEPA filter for full 500 CFM performance.
2. Airflow on high speed with all filters clean and no ducting is slightly over 500 CFM. The unit can be run with very dirty filters and virtually no flow without harming the unit. The operator's decision to change filters should be based on filter cost vs. the unit's filtering effectiveness.

If airflow is 250 CFM vs. 500 CFM, the unit will filter particles from a space at half the rate. The operator must judge if that is acceptable. If the operator determines the filters should be changed due to low airflow, it is most economical to change them in the following order:

1. Change the pre-filter (top) first. This is the least expensive filter. Recheck the airflow. If the airflow is acceptable, no other filters need to be changed.
2. If the airflow is still too low, the HEPA filter must be changed. To remove the HEPA filter, follow these steps:
 - A. Loosen the eight screws one revolution
 - B. Rotate all eight clips out of the way.
 - C. Remove old filter.
 - D. Installing the new filter is the reverse of these instructions

Optional Activated Carbon/Potassium Permanganate Filters:

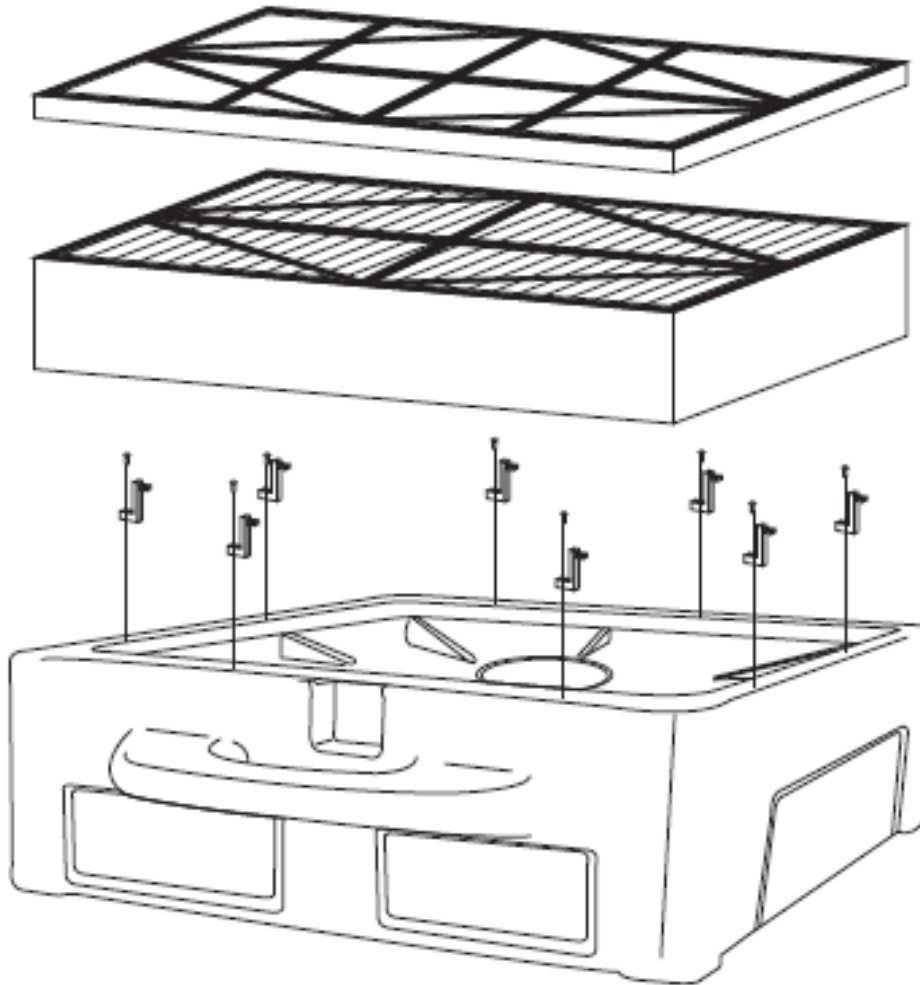
Optional filters are available. They use a blend of activated carbon and potassium permanganate. This blend removes most contaminants encountered in most filtering applications. The activated carbon removes the heavier volatile organics while the potassium permanganate removes lower molecular weight contaminants. This is well suited to the smoke odours present after fire damage.

AS110001 MAINTENANCE

The life of the media blend depends upon both the hours used and the contamination level.

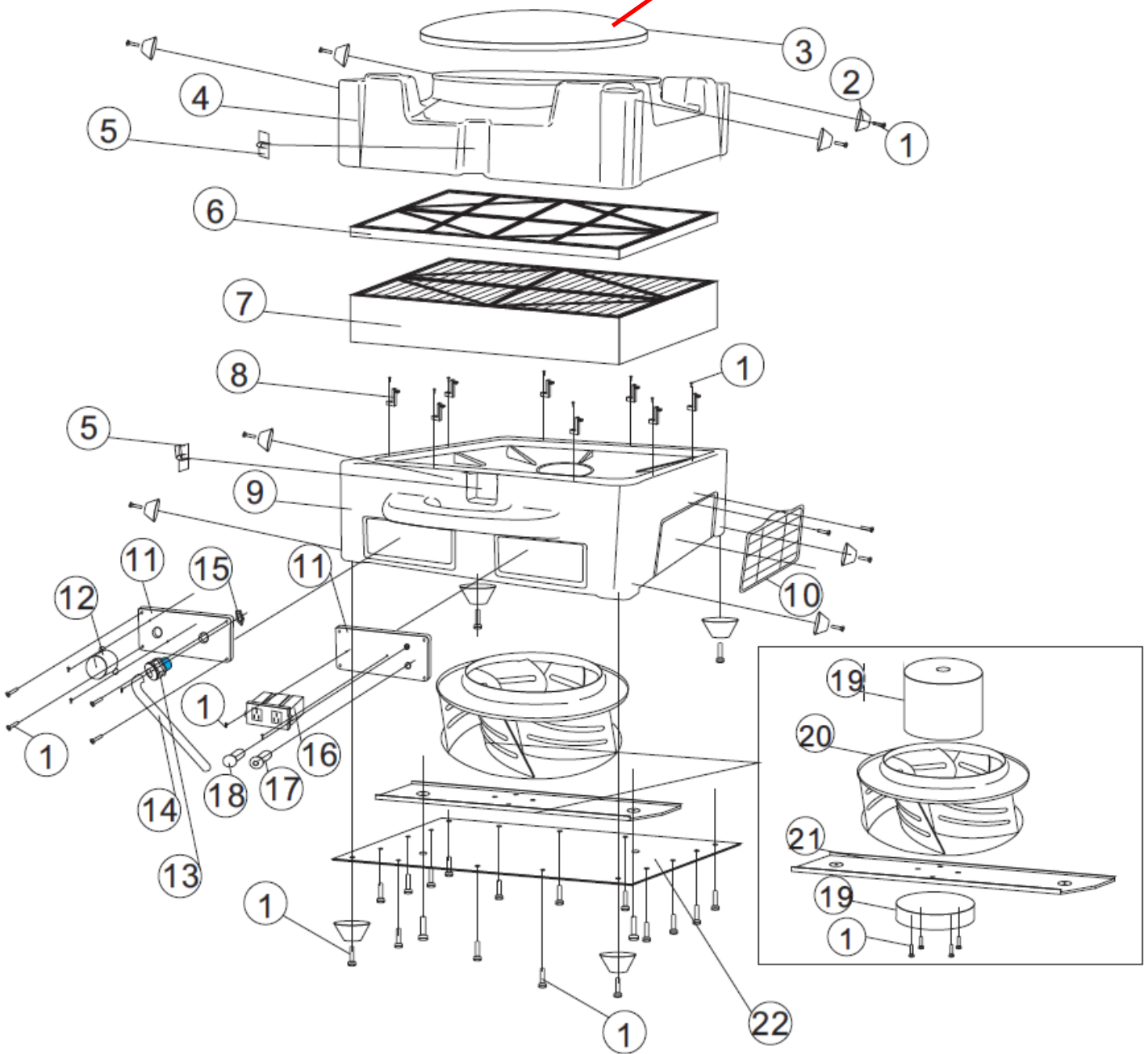
Another advantage of the blended media versus activated carbon only is that part of the blend changes colour as it loads up with contaminants. It starts out black, then turns pink, then brown, and finally white. It is best changed when it passes the brown stage and begins to turn white. It has lost most of its effectiveness at that point.

The filter is the same size as the pleated fabric filter. Install it in place of the pleated fabric filter.



AS110001 PARTS BREAK DOWN

NOTE: Remove foam cap before use.



ref#	Description	qty
1	Screw	46
2	Rubber foot	12
3	Removable Foam Cap	1
4	Upper half shell	1
5	Buckle	2
6	Primary efficiency filter	1
7	High efficiency filter	1
8	Fixed buckle	8
9	Lower half shell	1
10	Larger & Wider air outlet	1
11	Switch panel/GFCI panel	1
12	On/off rocker switch, blk	1

ref#	Description	qty
13	Strain relief-lq tight	1
14	Power cord	1
15	Nut,hex	1
16	Gfci outlet,female plug	1
17	Circuit breaker	1
18	Filter net plug alarm lamp	1
19	AC motor	1
20	Fan blade	1
21	Fixed plate	1
22	Bottom cover plate	1
23		1

AP110002 CROMTECH™ DRYMAX CARPET DRYER



IMPORTANT SAFETY INSTRUCTIONS:

CAUTION: *Risk of electric shock. Can cause injury or death to reduce the risk of electric shock*

- *Do not expose to standing water or rain*
- *Do not use an extension cord*
- *Unplug fan before servicing.*
- *Do not block air intake or outlet. One foot minimum distance to obstructions.*

INDOOR USE ONLY:

- Do not use as stool or bench
- Do not operate with damaged cord or plug.
- Do not run cord under carpeting.
- Do not cover cord with throw rugs, runners, or similar coverings.
- Do not route cord under furniture or appliances. Arrange cord away from traffic area and where it will not be tripped over.

WARNING: *Not Suitable for use with Solid-State Speed Controls*

AP110002 OPERATION

TRANSPORTING THE DRYMAX:

The Cromtech Drymax Carpet Dryer is designed to be stacked vertically or horizontally for transport.

ELECTRICAL REQUIREMENTS:

The Carpet Dryer can be plugged directly into any standard wall receptacle. Without ducting, the Carpet Dryer will draw 1.9 amps. Ducting will reduce amp draw. Up to 6x Carpet Dryers can be daisy chained on a standard 15-amp branch circuit.

DUCTING

The lip on the exhaust opening of the Carpet Dryer is designed to accommodate lay flat ducting with 14" or larger diameter.

RESETTABLE CIRCUIT BREAKER

The 10 amp circuit breaker protects the unit and devices connected to it. In case of a fault, the breaker can be reset at the Carpet Dryer control panel.

Use of multiple fans and any other connected devices must be in accordance with the National Electric Code and any additional codes or laws required by your local government.

IMPORTANT: Total amperage of the Carpet Dryer plus all devices plugged into its convenience receptacle is limited by the onboard circuit breaker. Excessive current will cause the circuit breaker to trip. This may occur instantly or after a while depending on the operating conditions.

IMPORTANT: When the Carpet Dryer is plugged into a standard "powered" wall outlet the Carpet Dryer's duplex outlet is electrically "HOT" and AC voltage is present.

AP110002 MAINTENANCE

WARNING: Disconnect the unit from power before servicing or cleaning. Replace all safety grills after servicing or cleaning

POWER CORD:

Visually inspect cord and plug head before use. If there are signs of damage or excessive wear, discontinue use until the unit has been serviced.

CLEANING:

The housing is made of durable and washable polypropylene. When cleaning, the use of solvents is NOT recommended. When washing inside the unit, disconnect the unit from its power source. Protect the switch, receptacle, and circuit breaker from water intrusion. Do not spray water or cleaning solution at motor. If motor does get wet, allow motor to dry completely before restarting. If fan is to be washed and not used within 24 hours, allow fan to drip dry for 10 minutes and then run for 5 minutes before storing.

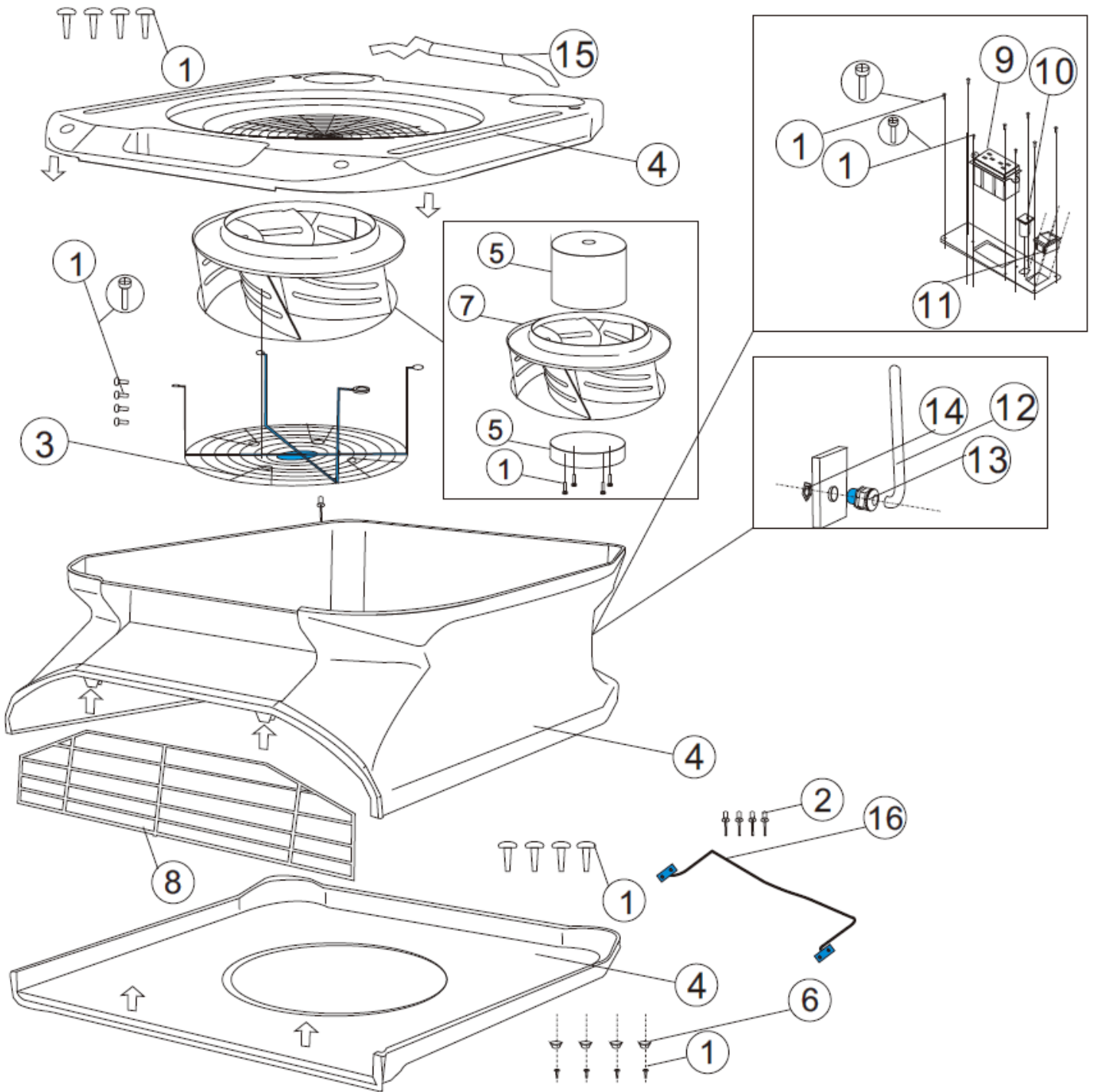
IMPORTANT: Do NOT remove impeller blade from motor assembly. Doing so can cause blade to become imbalanced upon re-assembly.

SERVICE:

CAUTION: Servicing the Cromtech Carpet Dryer with its high voltage circuitry presents a health hazard that could result in death, serious bodily injury, and/or property damage. Disconnect the appliance from the power supply before servicing. Only qualified service people should service this unit.

CAUTION: If the supply cord becomes damaged, they must be replaced by the manufacturer, its service agent or similarly qualified person to avoid a hazard.

AP110002 PARTS BREAK DOWN



ref#	description	qty	ref#	description	qty
1	screw	16	9	gpci outlet,female plug	1
2	Rivet	4	10	circuit breaker	1
3	wire grill	1	11	on/off rocker switch,blk	1
4	Housing	3	12	power cord	1
5	AC motor	1	13	strain relief-lq tight	1
6	rubber foot	4	14	nut,hex	1
7	fan blade	1	15	Handle	1
8	outlet grin	1	16	kickstand	1

AP160016 CROMTECH™ DOWN DRAFT BLOWER

WARNING: Do not stack dryers more than 4 units' high (for transport), Do not stack 5 units high for storage.

FOR BEST PERFORMANCE

- Keep machine clean and in good operating condition
- Have machine checked periodically by your Dealer
- Use only authorized service centres for parts or service
- Store machine carefully in dry area
- For optimum drying performance and safety, study and follow this manual

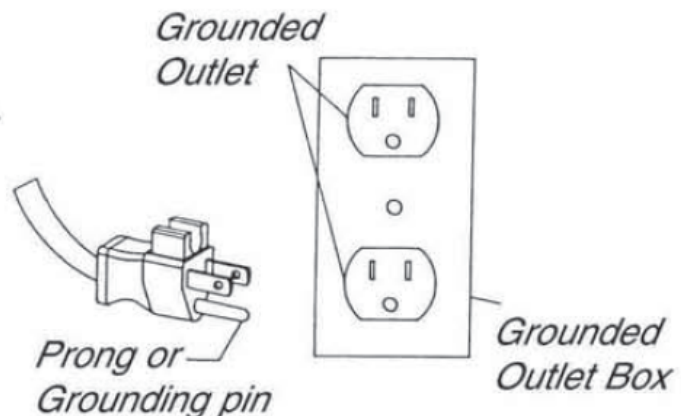


GROUNDING:

This appliance must be grounded. If it should malfunction or break down, grounding provides a path of least resistance for electric current to reduce the risk of electric shock. This appliance is equipped with a cord having an equipment-grounding conductor and grounding plug. The plug must be plugged into an appropriate outlet that is properly installed and grounded in accordance with all local codes and ordinances.

This appliance is for use on a nominal 240V circuit and has a ground plug (see illustration, right). Make sure that the appliance is connected to an outlet having the same configuration as the plug. No adaptor should be used with this appliance.

WARNING - Improper connection of the equipment-grounding conductor can result in a risk of electric shock. Check with a qualified electrician or service person if you are in doubt as to whether the outlet is properly grounded. Do not modify the plug provided with the appliance - if it will not fit the outlet, have a proper outlet installed by a qualified electrician.



AP160016 OPERATION

1. Plug in to a standard outlet with the correct voltage and amperage for the unit.
2. Place the dryer in the desired operating position.
3. Set the switch at the desired speed: low or high.
4. Check for proper operation before leaving the unit unattended.

NOTE: Do not move or carry the dryer when it is running.

10 AMP RESETTABLE CIRCUIT BREAKER

The Cromtech Down Draft Blower features a 10 amp circuit breaker that will "trip" if more than 10 amps of electrical current drawn through the cord.

OPERATING POSITIONS

The Down Draft Blower is designed to operate in multiple positions for any type of drying.

1. **Tilt Back** - Tilt the Blower backward on the four curved moulded legs at an angle to direct air for elevated drying
2. **Upright** - Set the Blower square with the handle on the top to direct air across a room
3. **Tilt Forward** - Tilt the Blower forward on the "standing legs" at an angle to direct airflow along the flow in front of the dryer
4. **Face Down** - Set the Blower on the four curved moulded legs with the "standing legs" facing up to direct air straight down
5. **Power Pitch** - The Blower is equipped with a 3° down angle leg
6. **Stack for Storage** - The Blower interlock and stack for easy storage and transport.



AP160016 MAINTENANCE & TROUBLE SHOOTING

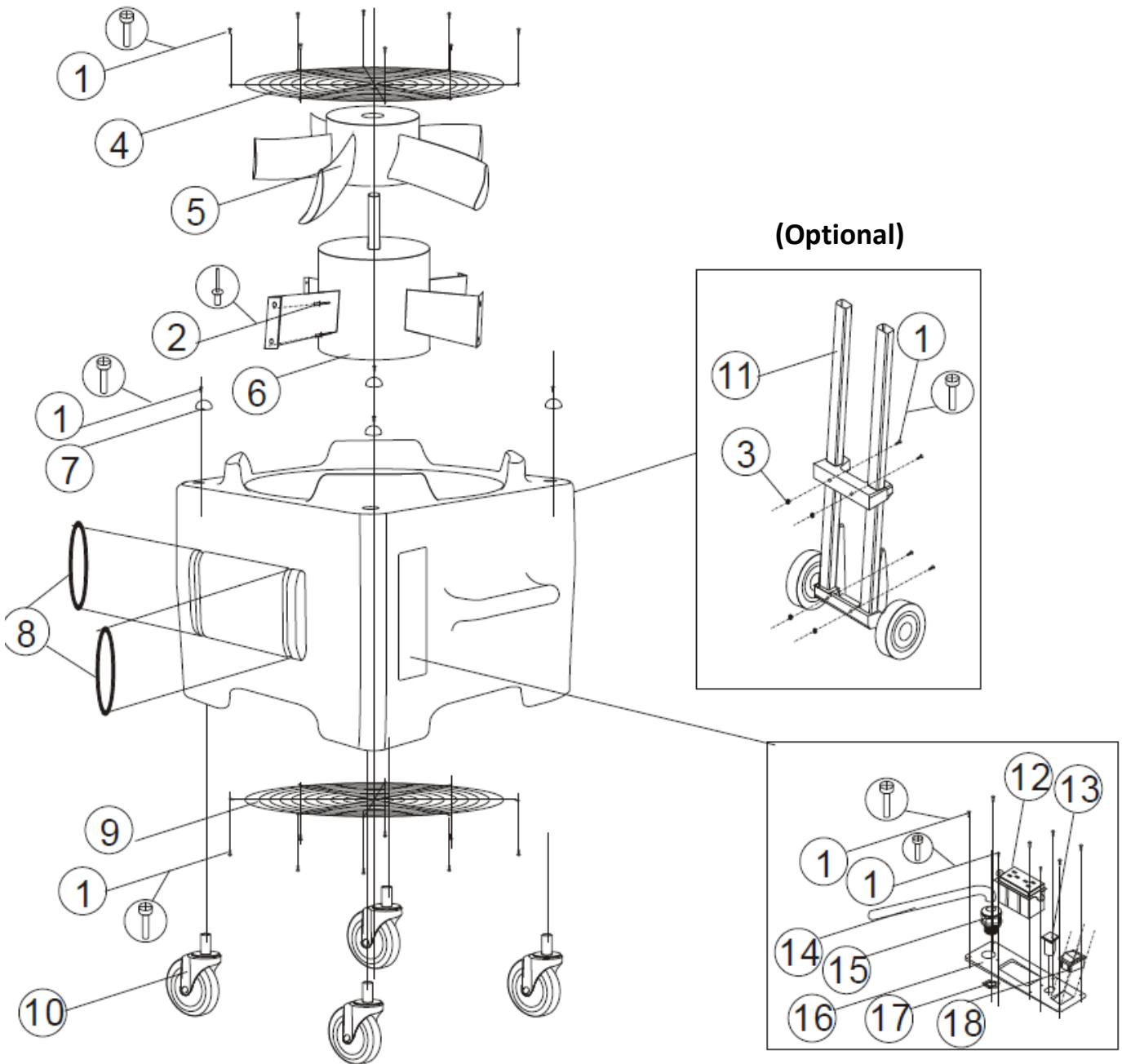
PERIODIC MAINTENANCE:

1. Check power cord for any breaks, separations, or cuts.
2. Make sure the ground pin or grounding prong is intact or the machine will be unsafe to operate.

TROUBLE SHOOTING (if the dryer will not be running):

1. Check electrical cord; is it firmly seated in wall outlet
2. Check if dryer circuit breaker is tripped, reset if necessary
3. Check to see if building circuit breaker is tripped.
4. If using an extension cord, make sure it is in good condition, proper gauge and firmly connected.

AP160016 PARTS BREAK DOWN



ref#	Description	qty
1	screw	32
2	Rivet	8
3	jacknut	4
4	wire grills	1
5	fan blade	1
6	AC motor	1
7	rubber foot	4
8	rubber ring	2
9	wire grills	1
10	wheel and socket	4

11	handle/wheel assembly, Narrow	1
12	gfcı outlet, female plug	1
13	circuit breaker	1
14	power cord	1
15	strain relief-lq tight	1
16	switch plate	1
17	nut, hex	1
18	on/off rocker switch, blk	1

AP110020 CROMTECH™ MULTI AIR MOVER

WARNING To reduce the risk of fire, electric shock, or injury:

1. Read the manual carefully and completely before attempting to operate the unit. This manual has important information for the use and safe operation of the machine. Following the recommendations outlined in this manual will assure years of satisfactory service from your unit
2. Improper connection of the equipment grounding conductor can result in a risk of fire, electrical shock, or personal injury. Always use a three-wire electrical system connected to the electrical ground. For maximum protection against electrical shock, use a circuit that is protected by a ground fault circuit interrupter. Check with a qualified electrician or service person if you are in doubt as to whether your outlet is properly grounded. Do not use a unit with a damaged cord or plug.
3. Machines can cause an explosion when near flammable materials and vapours. Do not use or store this machine with or near fuels, grain dust, solvents, thinners, or other flammable materials. Do not use flammables to clean this machine.
4. Do not immerse or use this unit in standing water. Such use may cause electrical shock. To avoid electrical shock, do not expose the unit to rain – store it indoors only. Do not expose the unit to freezing temperatures.
5. Do not move or carry the unit when it is turned on. Do not pull or carry by the cord, use cord as a handle, close a door on the cord or pull cord around sharp edges or corners. Keep cord away from heated surfaces. Do not unplug cord by pulling on it. To unplug, grasp plug, not the cord. Do not handle plug or air mover with wet hands.
6. Do not put any objects into openings. Do not use with any opening blocked; keep free of dust, lint, hair, and anything that may reduce air flow. Keep hair, loose clothing, fingers, and all parts of the body away from openings and moving parts.
7. Turn off all controls before unplugging.
8. Operate unit on a level and stable surface to prevent it from falling and possible cause of injury or damage.
9. Do not drop or throw the unit. Treatment of this type can cause damage to the components and create hazardous conditions.



AP110020 OPERATION & MAINTENANCE

Plug your Air Mover into a standard grounded outlet with the correct voltage and amperage. If you are unsure about the outlet, contact your supervisor. Turn on the switch and check that the unit operates properly before letting it run.

MAINTENANCE:

- Inspect the electrical cord and wiring for damage or discoloration
- Inspect for loose fasteners
- Clean grills on the front and back of the unit
- Listen for abnormal sounds
- Keep unit clean

PERIODIC MAINTENANCE:

Use compressed air or a vacuum to remove lint and other debris from the motor, screen, and blower wheel. Do not use a pressure washer to clean the unit

GROUNDING INSTRUCTIONS:

This machine must be grounded. If it should malfunction or break down, grounding provides a path of least resistance for electric current to reduce the risk of electric shock. This machine is equipped with a cord having an equipment grounding conductor and grounding plug. The plug must be inserted into an appropriate outlet that is properly installed and grounded in accordance with all local codes and ordinances.

WARNING: Improper connection of the equipment-grounding conductor can result in a risk of electric shock. Check with a qualified electrician or service person if you are in doubt as to whether the outlet is properly grounded. Do not modify the plug provided with the machine if it will not fit the outlet; have a proper outlet installed by a qualified electrician.

EXTENSION CORDS:

Use only three-wire 16/3 or larger gauge approved extension cords that have three-prong grounding type plugs and three-pole receptacles that accept the appliance's plug. Replace or repair any damaged cords or plugs.

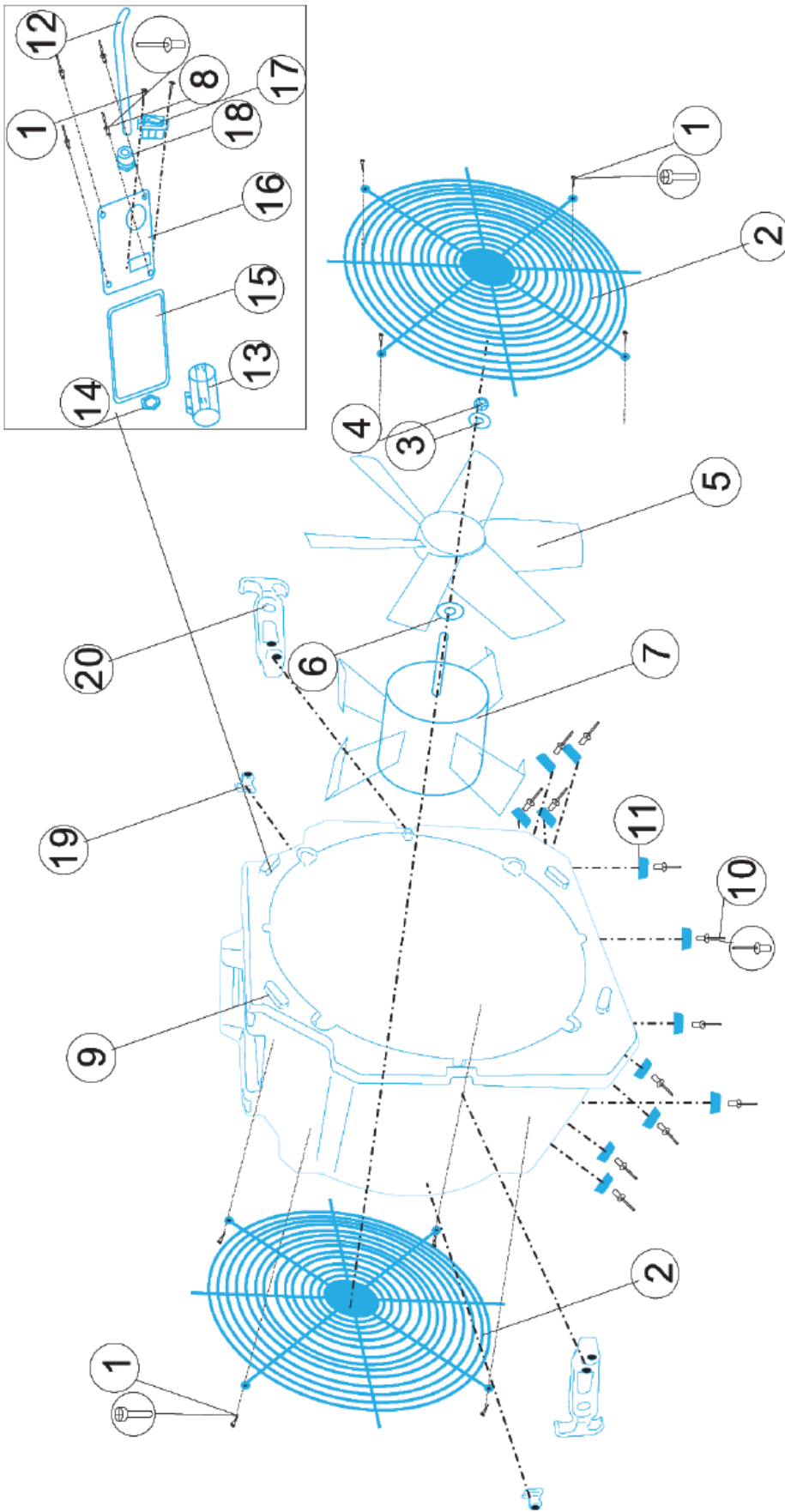
WARNING! - For the safe operation of this machine follow the instructions given in this booklet and the training given by your supervisor. Failure to do so can result in personal injury and/or damage to machine and property!

DO NOT OPERATE MACHINE IN AN EXPLOSIVE ENVIRONMENT!

AP110020 TROUBLE SHOOTING

Problem	Cause	Solution
Unit will not run.	<ol style="list-style-type: none"> 1. No power to unit. 2. Switch not on. 3. Switch is faulty. 4. Faulty/broken cord or motor wire 	<ol style="list-style-type: none"> 1. Plug unit in. Check circuit breaker. 2. Place in "ON" position. 3. Replace switch. 4. Perform continuity check, using volt/amp meter. Repair/replace faulty broken wire.
Unit runs but air mover makes loud scraping noise.	<ol style="list-style-type: none"> 1. Unit has been severely jolted causing blower wheel to rub against housing. 2. Unit has been severely jolted causing housing to deform. 	<ol style="list-style-type: none"> 1. Remove motor and replace damaged motor mounts. 2. Replace blower wheel.
Unit runs but vibrates excessively.	<ol style="list-style-type: none"> 1. Severe jolt has bent motor shaft causing unit to be out of balance. 2. Air mover blade damaged. 3. Dirt build up on one side of air mover blade. 	<ol style="list-style-type: none"> 1. Remove and replace motor. 2. Replace blade if necessary. 3. Clean air mover blade.
Unit runs but blower wheel does not turn.	<ol style="list-style-type: none"> 1. Motor bearings are failing or motor has developed an internal electrical fault. 2. Intake grill and/or exhaust grill is obstructed. 3. Excessive duct length. 	<ol style="list-style-type: none"> 1. Replace motor. 2. Remove obstruction. 3. Reduce duct length to recommended maximum

AP110020 PARTS BREAK DOWN



ref#	description	qty
17	on/off rocker switch,blk	1
18	strain relief-lq tight	1
19	Buckle	2
20	Buckle	2
21		
22		
23		
24		

ref#	description	qty
9	Multi Foot Fan shell	1
10	Rivet	12
11	rubber foot	12
12	power cord	1
13	Capacitor	1
14	nut,hex	1
15	gasket,switch plate	1
16	switch plate	1

ref#	description	qty
1	screw	10
2	wire grills	2
3	nut	1
4	flat washer	1
5	fan blade	1
6	blade backing washer	1
7	AC motor	1
8	Rivet	4

CROMMELINS™
MACHINERY

CROMTECH™ VENTILATOR FANS

OPERATION & INSTRUCTION MANUAL

Spare Parts & Service

Phone: 1300 554 524

Freecall Fax: 1800 636 281

spareparts@crommelins.com.au

www.crommelins.com.au