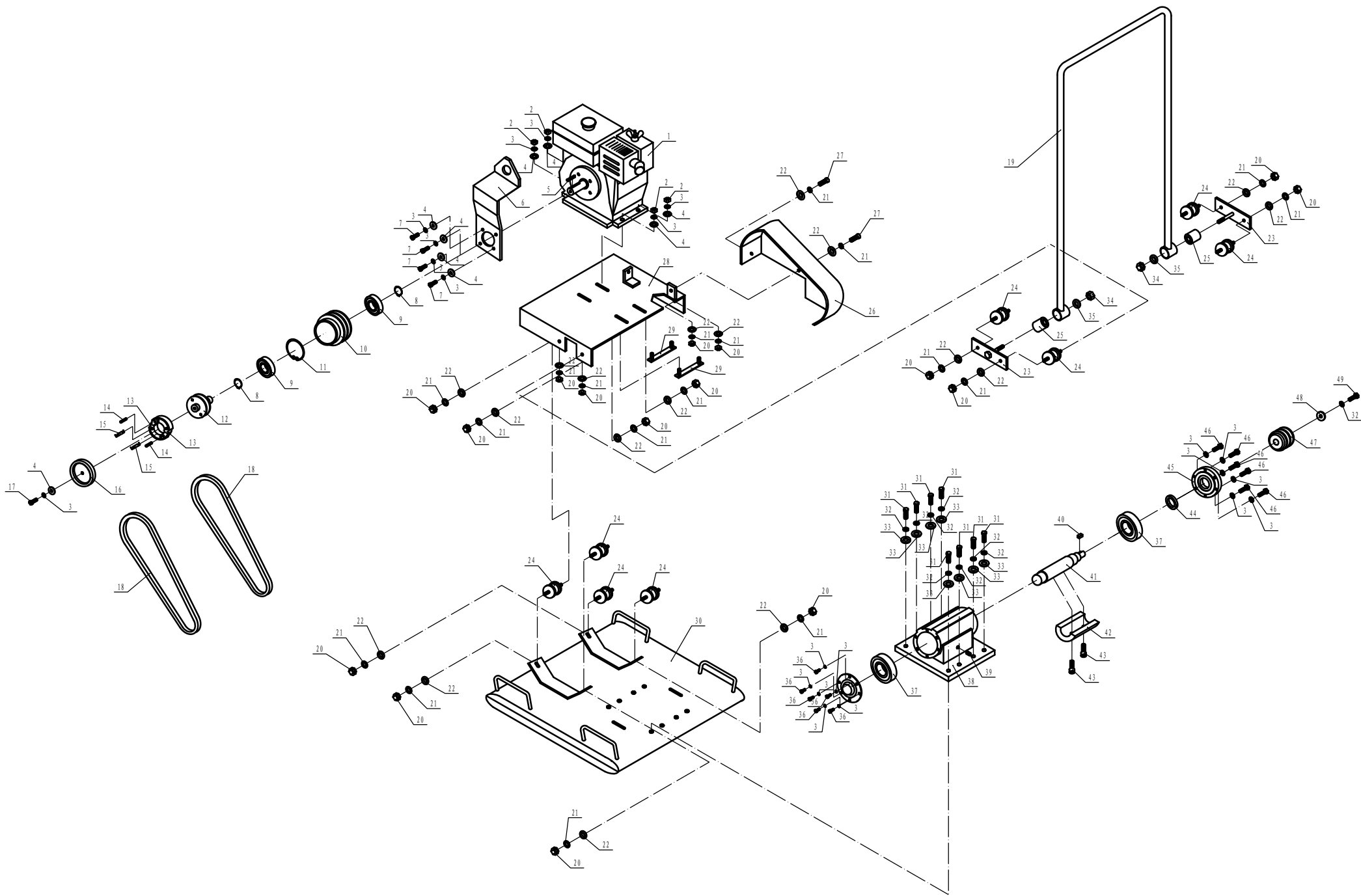


MASTERFINISH

550H PLATE COMPACTOR



PARTS BREAKDOWN



PARTS LIST FOR COMPACTOR 550

NO.	DESCRIPTION	Q'TY		NO.	DESCRIPTION	Q'TY
1	Petrol engine	1		26	Pulley cover	1
2	Hex locking bolt M8	4		27	Hex bolt M10x25	2
3	Spring washer ϕ 8	21		28	Motor mounting plate	1
4	Flat washer ϕ 8	9		29	Bolt assembly	2
5	Flat key B5x45	1		30	Base	1
6	Hanging button	1		31	Hex bolt M12x55	8
7	Bolt M8x20	4		32	Spring washer ϕ 12	9
8	Spring washer for shaft ϕ 30	1		33	Flat washer ϕ 12	8
9	Bearing 6006	2		34	Hex locking nut M12	2
10	Clutch wheel	1		35	Flat washer ϕ 12	2
11	Spring washer for hole ϕ 55	1		36	Hex bolt M8x20	6
12	Clutch shaft welding	1		37	Bearing 6309	2
13	Centrifugal block	2		38	Excitor box	1
14	Spring cylinder pin 8x26	2		39	Bolt M12x12	1
15	Returning spring	2		40	Flat key B8x25	1
16	Guard for clutch	1		41	Pulley shaft	1
17	Bolt 5/16" -24x1"	1		42	Eccentric block	1
18	V Belt	2		43	Inner hex bolt M12x25	2
19	Handle	1		44	Oil seal 48x35x10	1
20	Hex locking bolt M10	16		45	Excitor box cover	1
21	Spring washer ϕ 10	18		46	Hex bolt M8x30	6
22	Flat washer ϕ 10	18		47	Pulley	1
23	Handle fixing plate	2		48	Pulley washer	1
24	Rubber bar	8		49	Hex bolt M12x25	1
25	Rubber sleeve	2				