

INTRODUCTION

Thank you for purchasing the Taman Industrial Vacuum Cleaner, a high-quality product based on the newest state-of-the-art technology. We hope that this device will be to your satisfaction and meet your expectations.



NOTICE!

1. **These instructions are only for industrial vacuum cleaner type TDE1WD-AC.**
2. **Please pay particular attention to the safety regulations and safety instructions.**
3. **Read the complete instruction manual before using.**
4. **All spare parts and accessories used with this device must be those specified by Bersi.**
5. **Check before and after use that all the switches are in OFF position.**



The packaging material can be recycled. Please do not throw the packaging material into household waste; please send it for recycling.



Old devices contain valuable materials that can be recycled; these should be sent for recycling. Batteries, oil, and similar substances must not enter the environment. Please dispose of your old devices using appropriate collection systems.

Safety Instruction for Use

Please read and comply with these safety instructions prior to the initial operation of your device.

△ Retain these safety instructions for use for future reference.

- Please read the operating instructions for your machine before using it, and pay particular attention to the following safety instructions.
- Apart from the notes contained herein, the general safety provisions and rules for the prevention of accidents of the legislator must be observed.
- Check the power cord with mains plug for damage before every use. If the power cord is damaged, have it replaced immediately by the authorized customer service or electrician in order to avoid possible hazards.
- Never touch the mains plug with wet hands.

Power connection

△ Connect the electric plug to a power outlet with the correct voltage

- Make sure that the power cord or extension cables are not damaged by running over, pinching, dragging or similar. Protect the cable from heat, oil, and sharp edges.
- The power cord and the extension cable must be checked regularly for damages; such as cracks or aging. If damage is found, the cable must be replaced before further use.
- Do not connect the machine to an unearthed socket

Never vacuum up the following materials:

- Do not vacuum up any burning or glowing objects.
- Certain materials may produce explosive vapors or mixtures when agitated by the suction air!
- Explosive or combustible gases, liquids and dust particles (reactive dust particles)
- Reactive metal dust particles (such as aluminum, magnesium, zinc) in combination with highly alkaline or acidic detergents
- Undiluted, strong acids and alkalis
- Organic solvents (such as petrol, paint thinners, acetone, heating oil).

In addition, these substances may cause the device materials to corrode.

Application

- The operator must use the device properly. The person must consider the local conditions and must pay attention to third parties, in particular children, when working with the device.
- Never leave the device unattended as long as it is in operation and the power cord has not been pulled.
- Always use appropriate gloves while working on the device.
- The device may only be used by persons who have been instructed in handling the device or have proven qualification and expertise in operating the device or have been explicitly assigned the task of handling the device.
- This machine is not intended for use by persons (including children) with reduced physical, sensory or mental capabilities, or lack of experience and knowledge.
- Children should be supervised to prevent them from playing with the device.
- The device is to be fastened properly during transportation.

Maintenance

- Switch off the device and in case of devices connected to the power outlet, pull out the power cord before cleaning and performing any maintenance tasks on the machine. Shut the device off when switching to a different function.
- Maintenance work may only be carried out by approved customer service outlets or experts in this field who are familiar with the respective safety regulations.

Starting Up

Bring the device to working position- secure it, if required, by locking the caster brakes.

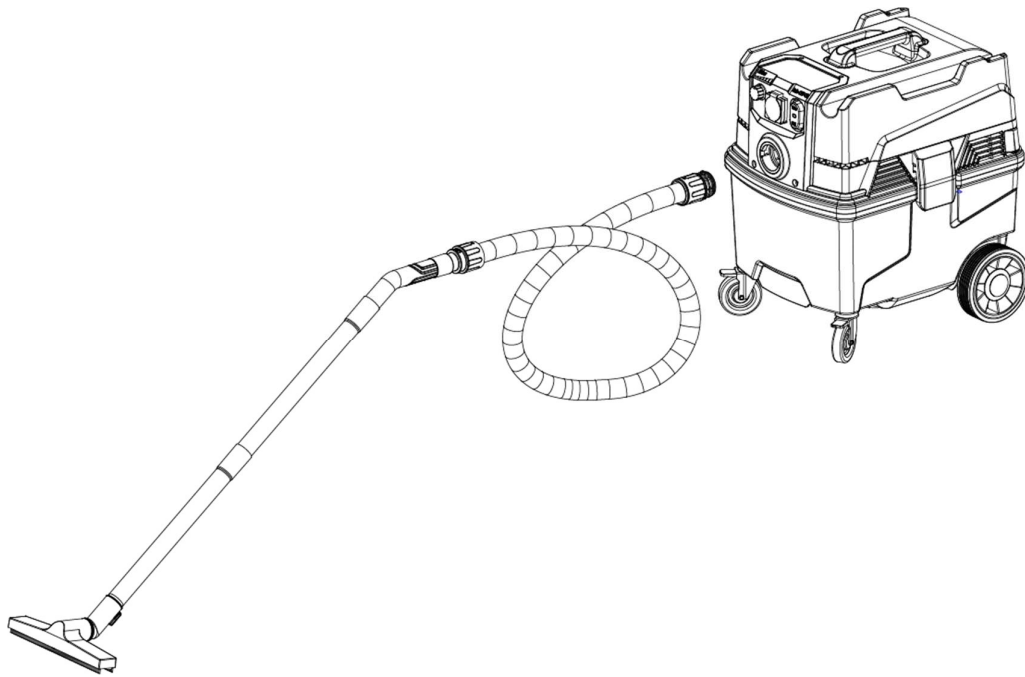
⚠ ***Before assemble the floor tool set or any other optional accessory, please remember to check if they are all in good condition.***

1. Connect the floor brush with the 2 straight wands.

Connect the hose with the wand via hose-cuff.

Connect the hose with the adaptor via hose-cuff

Finally, the floor tool set should be attached to the dust suction connection on the device.
Remember to tighten the knob.



Taman has a full library of floor tools and other accessories for your specific application. Check your local distributor or our customer service for detail.

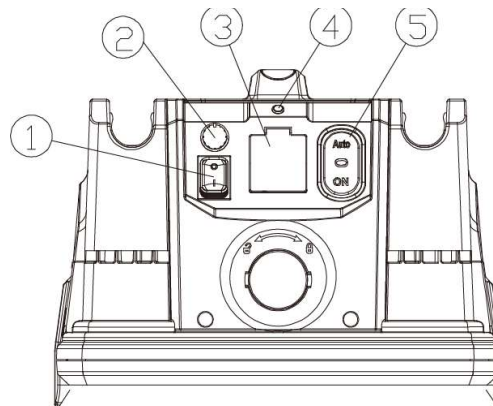
FUNCTION

The machine is designed for vacuuming and separating dry, non-combustible dust with an explosion limit value of 0.1mg/m^3 .

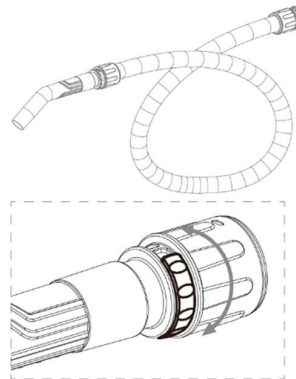
The dust extractor is started by the switch.

- ① Power switch On/Off
- ② Motor speed control switch
- ③ Socket (Power supply for power tools, max.1200W)
- ④ Vacuum pressure indicating light (light will be on when filter blocked, need to clean filter deeply.)
- ⑤ ON/OFF Switch

On	Start vacuum
0	Shutdown vacuum
Auto	Start vacuum by the connected power tool, after power tool stops, vacuum will stop after 7 seconds delay



There's a airflow adjusting ring on the handle, Airflow can be adjusted by rotating the adjusting ring, to meet different dust vacuuming needs.



Notice ! ! !

- Make sure the electric plug and socket are matching
- Make sure the hose and inlet are matching
- Connect the accessories and hose end

Notice ! ! !

- Turn off the machine until the motor stop working completely.
- Please disconnect the plug when the machine doesn't work.

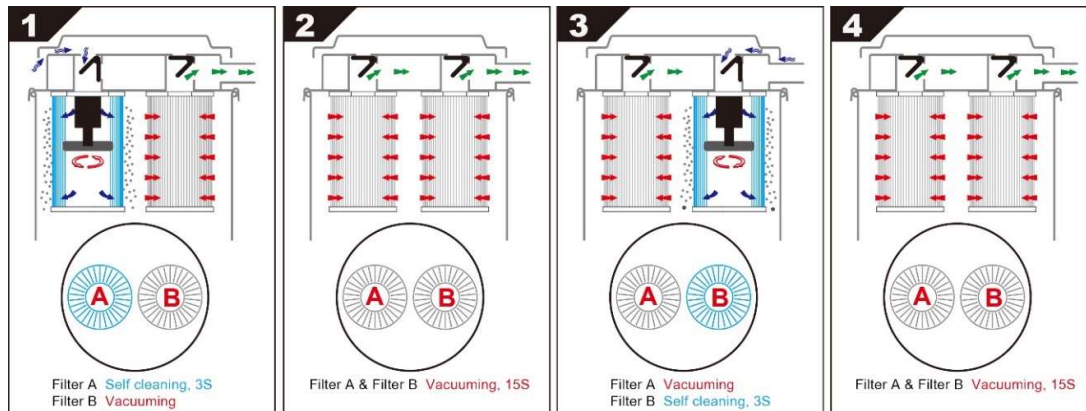
Dust-laden air is then sucked through the inlet valve at high speed via the suction hose. The air is slowed down by the cyclone and coarse dust particles are separated out, partly by centrifugal force and partly by gravity. Air and finer particles then pass through the filter system where separation is made. The machine is designed for filter cleaning by auto cleaning.

The separated dust accumulates in the cyclone until the machine is switched off, when it drops through the bottom flap into the dust collection tank. The filter cleaning process is not completed before it is clear that the dust inside the tank has fallen down into the collection tank. In some

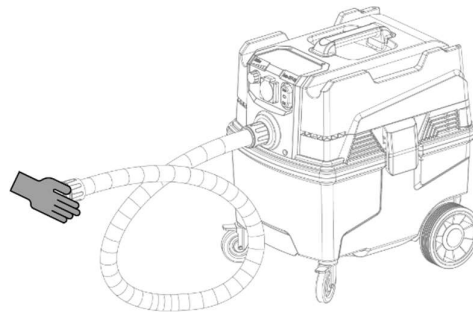
extreme cases the adhesive ability of the dust must be broken manually. This can be done by hitting the dust through the bag or tapping the tank using i.e. a rubber hammer.

Innovated auto cleaning

When start the vacuum, 2 filters will be cleaned alternately and automatically.
See instructions:



- In some special application, filter may be blocked, recommend the filter deep cleaning: start vacuum, cover the inlet with hand for 60 seconds.



If suction remains poor afterwards, the filters need to be replaced.
See instructions in chapter FILTER CHANGE.

Cleaning, maintenance and storage

Empty and clean the vacuum cleaner after every use and whenever necessary.

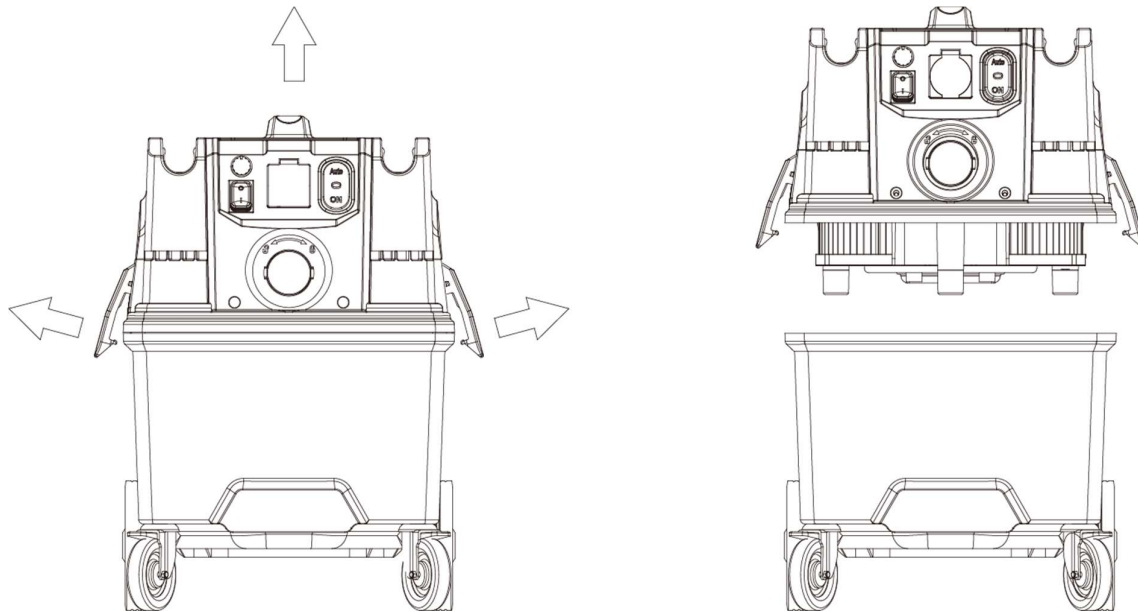
No outside help is required for carrying out basic maintenance and cleaning. The device surface and the inside of the tank should be cleaned regularly using a damp cloth.

- Do not clean the device with a water hose or high pressure water jet (danger of short circuits or other damage). Do not immerse the motor head into water for cleaning purposes.
- Empty the dust-collecting tank (refer chapter "emptying the dust collecting tank").
- Vacuum and wipe the device inside and outside with a damp cloth.
- This device must only be stored in a dry room, out of reach of unauthorized persons.

Emptying the dust collecting tank

To avoid too much filling of the dust collecting tank, need to check it regularly depending on the type and volume of the sucked in material.

Shut down the device and secure it using the parking brakes at the casters.

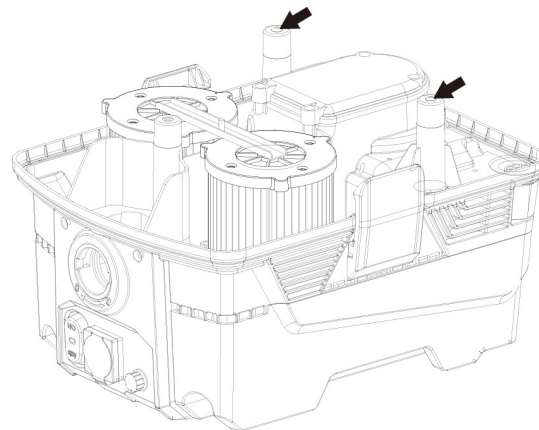


Open the both sides buckle to separate the upper and lower container, fasten the dust collecting bag and take out from lower container.

Put a new bag in lower container and make sure the holes of the bag inside of the lower container, and then close both sides buckles.

Liquid level sensor

- Remove the dust collection bag, use TDE1WD-AC to suck water, max water suction capacity is 21L, vacuum stops automatically when water suction is full, turn on the switch "0" at this time, remove the upper container, empty the lower container, and then install the upper container, vacuum can start working.
- The liquid level sensor probe should be cleaned regularly, keep the probe clean, prevent poor contact, resulting in the failure of the liquid level sensing function.



Filter change

Risk of dust dispersion - Use personal safety equipment

Unhealthy dust can be spread during filter change. Accordingly, the user should wear protective glasses, protective gloves, and a breathing mask conforming to protection class FFP3.



WARNING

Remember to switch off the machine and pull the plug out of the outlet before servicing.

Main filter:

Loosen the 2 buckles of both sides and remove the upper container, twist off the center screw on the metal strip and remove, take out the old filter and insert a new filter.

Important:

If you are removing the filter in order to clean it. Hitting the filter with force or use of compressed air will destroy the filter. It can handle water, but high-pressure water cleaning will destroy it.

SERVICE

- When cleaning and servicing the machine, you must switch off the machine, cut down the power tools from vacuum socket and remove the plug from the outlet.
- Avoid cleaning with a high-pressure cleaner. If necessary, do not direct at the openings on the machine, especially the opening for cooling air.
- Before moving the machine from the work area, the machine must be cleaned.
- All other equipment must be regarded as contaminated and be treated thereafter.
- If possible, use a special suitable room.
- Proper personnel protective equipment must be used. Dust can be spread when the coarse filter and the absolute filter are replaced that can be hazardous to health. Accordingly, the user should wear protective glasses, protective gloves, and a breathing mask conforming to protection class FFP3.
- All parts which are contaminated after service must be properly disposed of in plastic bags according to all regulations.
- If the machine has to be used for other purposes, it is extremely important that the machine is cleaned, to avoid the spread of hazardous dust.
- Do not puncture the filter. Risk of dust dispersion.

WARRANTY

All Bersi devices and accessories have a 12-month factory warranty counting from the manufacturing date on the machine. Do not attempt to repair the suction apparatus without the consent of the manufacturer.

The warranty does not cover defects which are the result of normal wear and tear, negligence, defective use, unauthorized repair or the suction apparatus being connected to the incorrect voltage.

In the event of any complaint, the suction apparatus or an agreed part of it must be returned to us or our authorized representative for warranty examination and for any warranty repair or replacement.

PROBLEM SOLVING

The dust extractors are designed and manufactured for severe environments and tasks, but the user must note that the machine must be protected from knocks and blows. Filter, seals, attachments, and connections are carefully adapted and selected with regard to the operator's work environment.

Therefore, the operator and service personnel must treat the machine with care in order for it to work correctly for many years.

Issue	Cause	Solution
Motor doesn't start	No Power	Plug in machine
	Cable defective	Replace cable
	Switch defective	Replace switch
Motor stops immediately after starting	Shortcut in cable/machine	Order service
Motor runs but there is no suction	Hose not connected	Connect hose
	Hose clogged/blocked	Clean hose
	No dust collection bag	Fit dust collection system
Motor runs but poor suction	Hole in hose	Replace hose
	Filter clogged	Clean filter/Replace filter
	Loose top cover	Adjust
	Defective gaskets	Replace affected gaskets
Dust blown from motor	Wrongly assembled or damaged filter system	Adjust/Replace filters
Abnormal noise		Order service



Notice ! ! ! _____

Any other problem please contact Bersi order service

Accessories and Spare Parts

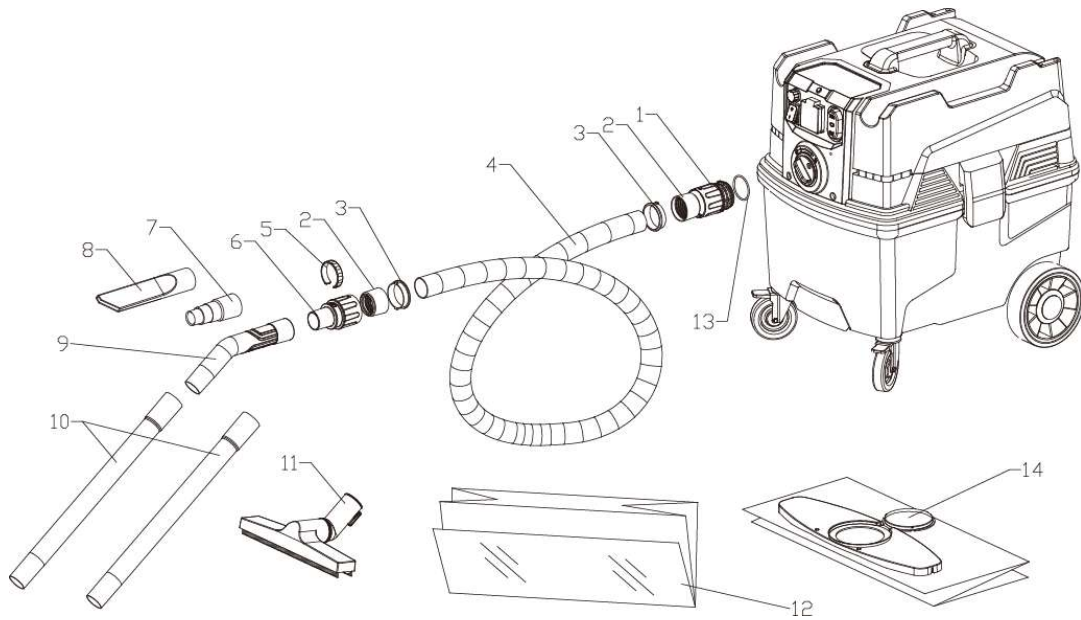
- Only use accessories and spare parts which have been approved by the manufacturer. The exclusive use of original accessories and original spare parts ensures that the device can be operated safely and trouble free.
- At the end of the operating instructions you will find some exploded diagrams about the main assemblies of the device. In these diagrams you could search the spare parts you may need.
- For additional information about spare parts, please check the local distributors.

Technical Data

Data	Unit	TDE1WD-AC	
Voltage	V	220-240V 50/60HZ	110-120V 50/60HZ
Power (max)	KW	1.2KW	1.3KW
	HP	1.7HP	1.85HP
Airflow (max)	M ³ /H	262	260
	Cfm	154	153
Water lift (Max)	Mbar	250	250
	Inch	104	104
Filter quantities	Pcs	2	
Filter efficiency		HEPA, > 99.95%@0.3μm	
Filter cleaning		Innovated auto cleaning	
Airflow adjustable		YES	
Power socket	Amps	10	
Power tool quick start		YES	
Remote control start		Optional	
Tank volume		38L	10Gal
Dimensions (L*W*H)		385X500X570mm	15.15*19.7*22.4inch
Weight		13.5kg	19lbs

TDE1WD-AC

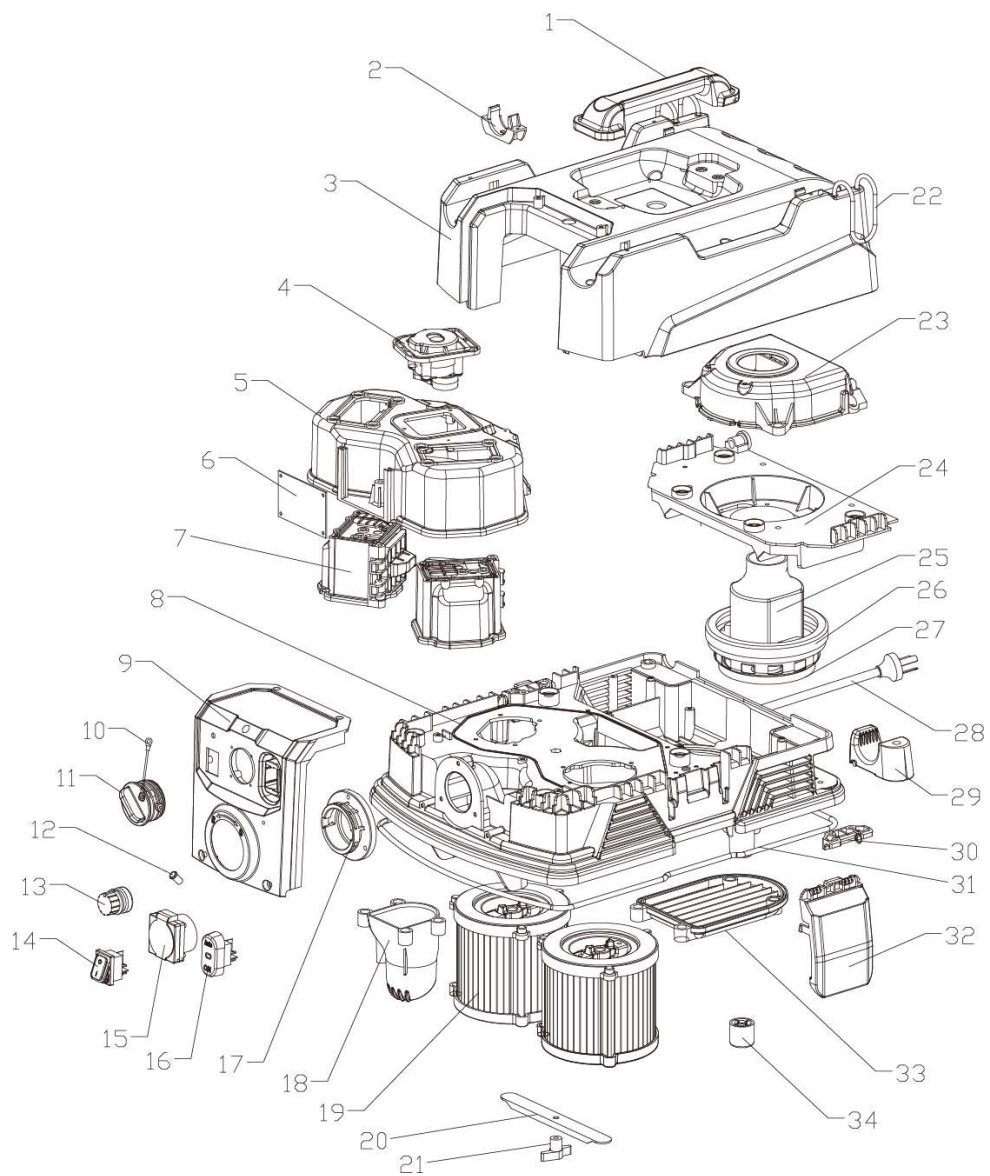
Packing list



S/N	P/N	Description	Quantity	Specifics
1	C3067	D35 Hose cuff 1-vaccum side	1PC	
2	C3086	D35 Thread tightening head	2PCS	
3	C3087	D35 Bayonet coupling	2PCS	
4	S8071	D35 Anti-static hose	4M	
5	C3080	Airflow adjust ring	1PC	
6	C3068	D35 Hose cuff 2-handle side	1PC	
7	S8072	D35 Reducer adapter	1PC	
8	S8073	Crevice tool	1PC	
9	C3082	D35 Bent wand handle	1PC	
10	S8075	D35 Straight wand	2PCS	D35*450
11	S8074	D35 Floor brush	1PC	L300
12	S8078	AC150 dust bag	5PCS	
13	S0112	O shape ring	1PC	48*3.5
14	S8086	TDE1WD-AC dust collection bag	1PC	

TDE1WD-AC

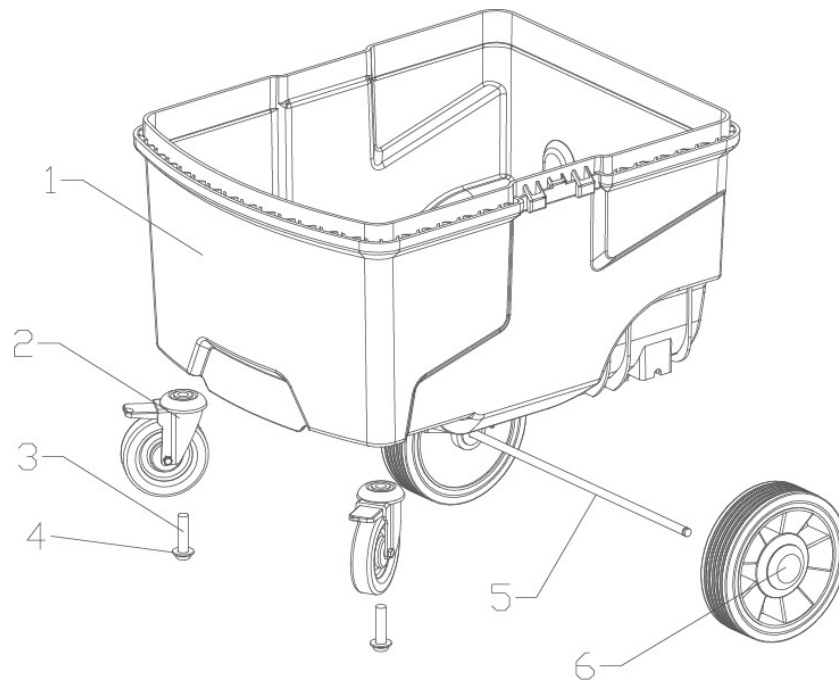
Exploded views



S/N	P/N	Description	Qty	Specifics
1	C3058	Lifting handle	1	
2	C3070	Hose clamp	4	
3	C3059	Top cover	1	
4	B0042	Driving module	1	220V
	B0041	Driving module	1	110V
5	C3063	Air hood	1	
6	S1064	AC150 Control module PCB	1	
7	B0047	AC150 Reserving valve assembly	1	220V
	B0046	AC150 Reserving valve assembly	1	110V
8	C3060	Center cover	1	
9	C3062	Panel	1	
10	S0115	TDE1WD-AC lanyard	1	
11	C3090	Inlet seal complete set	1	
12	S1072	Vacuum pressure indicating light	1	With cable and terminal
13	S1063	Speed adjust switch	1	
14	S1049	Water proof rocker switch with light	1	
15	S1050	10A power output socket	1	
16	S1062	AC150 Rocker switch	1	
17	C3066	Flanged fitting	1	
18	C3091	Dust bag air inlet	1	
19	S8076	AC150 filter assembly	2	
20	C2247	AC150 filter support strip	1	
21	S0097	Hand nut	1	M6
22	S0114	Elastic string	2	Φ4-0.5m
23	C3064	Motor cover	1	
24	C3065	Motor holder	1	
25	S1065	AC150 single phase bypass motor	1	230V-1200W
	S1066	AC150 single phase bypass motor	1	110V-1300W
26	C3007	Motor damping ring	1	
27	C3089	118 motor damping ring	1	
28	S2005	Power cord with plug 230V	1	3*1.5 Length 8m RVV-10A plug
	S2006	Power cord with plug 110V	1	3*2.0 Length 8m RVV-US plug
29	C3073	Hose holder	2	
30	C3072	Buckle holder	2	
31	S0113	Sealing ring	1	Φ6-1.6m
32	C3071	Buckle	2	
33	C3069	Cover plate	1	
34	C3088	TDE1WD-AC Foot pad	2	

TDE1WD-AC

Dustbin kit



S/N	P/N	Description	Qty	Specifics
1	C3061	Dust collection container	1	
2	S9038	3" universal wheel	2	
3	S0102	Hex socket bolts with half round head	2	M10*40
4	S0107	Spring washer	2	M10
5	C2246	TDE1WD-AC axle	1	
6	S9039	6" back wheel	2	