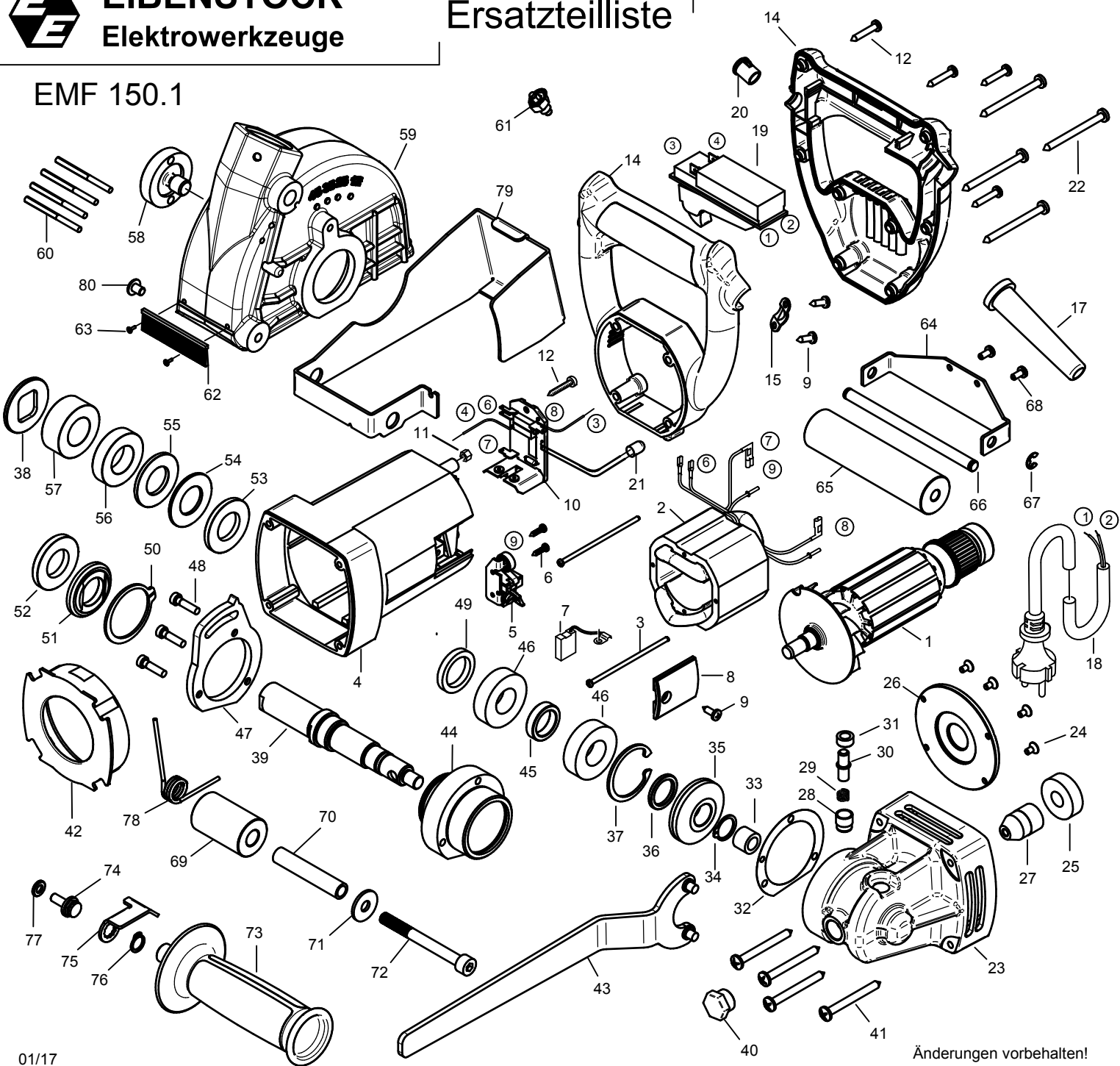


EMF 150.1



EMF 150.1 - 230 V

0671A000

No.	Description	Order No.	Pcs
1	rotor complete	76711100	1
2	stator complete	76711150	1
3	special screw Meplast 3x78	80201234	2
4	motor housing	80900069	1
5	brush holder	80201199	2
6	self tapping screw HC 2,9x13	80201252	4
7	carbon brush 6,3x16x20L82F10	80700044	2
8	brush holder cover	80900073	2
9	self tapping screw HC 4,2x13	80201270	4
10	PCB / circuit board	80601155	1
11	plastic nut M5	80201295	2
12	self tapping screw HC 4,2x25	80201273	6
13			
14	handle segment	80900268	1
15	wire locking flange	85000020	1
16			
17	cable grommet	83000004	1
18	connecting cable 2x1,5mm², 5 m	80600403	1
19	switch	80600506	1
20	fastener	80601153	1
21	LED	80601154	1
22	self tapping screw HC 4,8x60	80201285	4
23	gearbox housing	76711400	1
24	countersunk screw M4x10	80200632	4
25	grooved ball bearing 6201 LUZ	80410101	1
26	armature plate	76711110	1
27	bevel pinion	85000313	1
28	bush 1	75412554	1
29	compression spring 0,7x8,5x9x1,5	80200802	1
30	bolt	75412425	1
31	bush 2	75412555	1
32	gearbox seal	82000516	1
33	needle sleeve DL 1012	80420116	1
34	locking ring 17/1	80201323	1
35	bevel gear	85000314	1
36	spacer 2	76711425	1
37	locking ring 42/1,75	80201335	1
38	pressure washer	76721422	1
39	work spindle	76721420	1
40	cap screw 3/8"	85000224	1

No.	Description	Order No.	Pcs
41	pt-screw 50x50	80201436	4
42	air guiding ring	80900284	1
43	face spanner	80430042	1
44	frame	76711410	1
45	spacer 1	76711415	1
46	grooved ball bearing 6004 2RS	80410051	2
47	punched disc	76711405	1
48	screw M5x30	80201616	3
49	shaft seal ring 24x36x7	83000205	1
50	locking ring 42/1,75	80201349	1
51	flange	76711580	1
52	ring 4	76711587	1
53	ring 3	76711586	1
54	ring 1	76711584	1
55	ring 2	76711585	1
56	ring 5	76711588	1
57	ring 6	76711589	1
58	clamp screw	76711583	1
59	suction hood	7671A575	1
60	grooved pin 4x55	80200587	4
61	snap bolt	80110101	1
62	brush strip	76711597	1
63	screw M4x6 ISO 7380 F	80201462	2
64	roll mounting	76711578	1
65	roller 1	76711574	1
66	axle	76711573	1
67	lock washer 6	80201504	2
68	self tapping screw HC 4,2x13	80201270	2
69	roller 2	7671A576	1
70	clamp tube	76711577	1
71	washer 8,4	80201391	1
72	screw M8x80	80201222	1
73	handle	73320595	1
74	locking screw	76711407	1
75	clamping lever	76711408	1
76	locking ring 11/1	80201320	1
77	disc 6,4	80201375	1
78	torsion spring	7671A577	1
79	dust protection	7671A650	1
80	lens head screw M6x8	80201212	1

EMF 150.1 - 110 V

0671D000

1	rotor complete	76710100	1
2	stator complete	76710150	1
7	carbon brush 6,3x16x20L41F13	80700040	2

10	PCB / circuit board	80601156	1
17	cable grommet	83000228	1
18	connecting cable 32 A, 5m	76710262	1