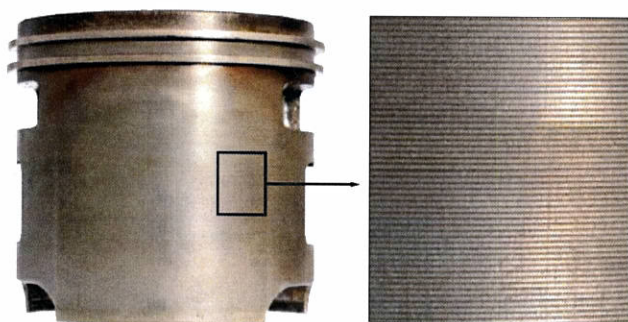
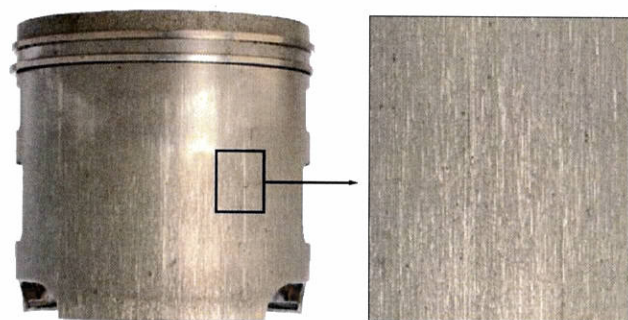


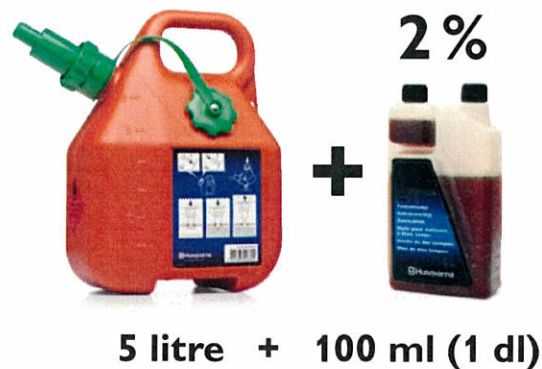
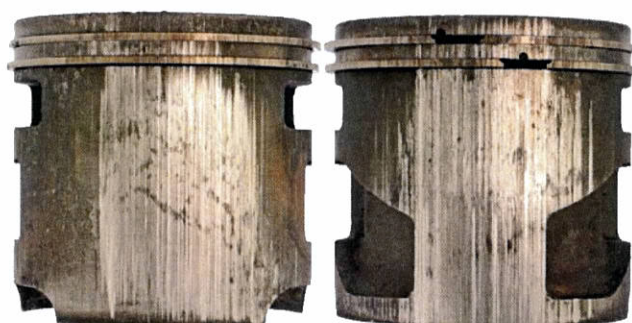
Normal wear • Normaler Verschleiß • Usure normale • Desgaste normal • Usura normale • Normale slijtage • Normalt slitage  
通常磨耗



Dust • Staub • Poussière • Polvo • Polvere • Stof • Damm  
ダスト



Scoring • Kerben • Éraflures • Gripajes • Rigature • Krassen • Skärningar  
引っかき傷



Overheated piston top • Überhitzte Kolbenspitze • Sommet de piston surchauffé • Cabeza de pistón sobrecalentada  
Parte superiore del pistone surriscaldata • Oververhitte zuigerkop • Överhettad kolvtopp  
ピストン上部の過熱

